



1 The procedure to install Moodle on Ubuntu Linux 16.04

1.1 Getting ready for Moodle installation

1. To follow the installation procedure, you need to be connected to the internet.
2. Locate the tutorial **Getting ready for Moodle installation**.
3. This tutorial explains the prerequisites for installing **Moodle** on **Ubuntu Linux OS**.
4. At 0:50 the tutorial mentions the system prerequisites for installing Moodle. Make sure you have the right configuration machine.
5. At 2:28 the tutorial explains to check whether **XAMPP** installation is already installed in your Ubuntu Linux system.
6. At 4:02 the tutorial shows to check the version of PHP on your system.
7. At 4:50 the tutorial shows to check the version of MariaDB on your system.
8. At 7:00 the tutorial shows that the XAMPP is running successfully.
9. If you get an error in XAMPP related to port refer to **section 3 XAMPP - Errors** of this sheet for solution.
10. At 7:12 the tutorial explains to add a user and create a database for Moodle.
11. Follow the instruction from 7:12 and proceed to do the setup as shown in the tutorial.

1.2 Installing Moodle on Local Server

1. Locate the tutorial **Installing Moodle on Local Server**.
2. At 1:44 the tutorial explains how to launch XAMPP and to check the DOCUMENT_ROOT path where the Moodle has to be installed.
3. At 2:48 the tutorial explains to go to the official website of Moodle which is www.moodle.org
4. To follow our tutorial, Moodle 3.3 can be downloaded from the link: <http://www.spoken-tutorial.iitb.ac.in/moodle>
5. Follow the instruction from 2:57 and proceed ahead.
6. At 10:23, the tutorial shows some error under **Other Check** option. If you get the same error, please refer to the **Additional reading material** link of this tutorial for solution.
7. Proceed with the setups as shown in the tutorial and complete the installation.
8. At 14:10, we can see the Moodle site which is ready to use.
9. To practise using the side-by-side method, adjust the size of the web browser containing the video to the left half of your screen. On the right half open and fit the web browser containing Moodle page.

2 The procedure to install Moodle on Windows 10

2.1 Follow the given steps

1. To follow the installation procedure, you need to be connected to the internet.
2. Go to the given link to download moodle:
<https://download.moodle.org/download.php/windows/MoodleWindowsInstaller-latest-33.zip>
3. Open file explorer by pressing Windows + E. Browse to the folder where you have saved the Moodle zip file.
4. Create a folder **Moodle** in C drive. Right-click on the zip file and select Extract All. Click on Browse option and select C drive and then Moodle folder. (eg: C:\Moodle). Click on the **Next** button.
5. Go to the Moodle folder.
6. Double click on **Start Moodle** application. It will open command prompt and start the **Apache** and **MySql** services.
7. If you get an error in XAMPP related to port refer to **section 3 XAMPP - Errors** of this sheet for solution.
8. If firewall is enabled, a dialog box appears. Click "Allow access"
9. To check whether **Apache** and **MySql** services are started, go to C:\Moodle \server and open **xampp-control** application. This will open **xampp control** panel. Select language from the language dialog box. Click on Save.
10. Open browser and type **localhost** in the url. This will redirect to **Moodle** installation page.
11. Choose a language. English is the default. Click on "Next" button.

2.1.1 Verify the Moodle paths

1. Web address: **http://localhost**
2. Moodle directory: **C:\Moodle\server\moodle**
3. Data directory: **C:\Moodle\server\moodledata**
4. Click on "Next" button.

2.1.2 Database configuration page

In the Database configuration page

1. Enter your database credentials
2. Database host: localhost (by default localhost)
3. Database name: moodle-st
4. Database user: moodle-st
5. Database password: moodle-st

2.2 Proceed with the given steps

1. Let other fields remain as they are. Click "Next" button
2. Read the licence agreement and click "Continue"
3. Next is the **Server checks** page.
4. Scroll down to see the message "**Your server environment meets all minimum requirements**". Click on Continue.
5. This step may take some time depending on your system configuration. Click Continue when you get a success message for the installation.
6. The next page is for administrator configuration. Enter the username that you want for the Moodle Administrative page.

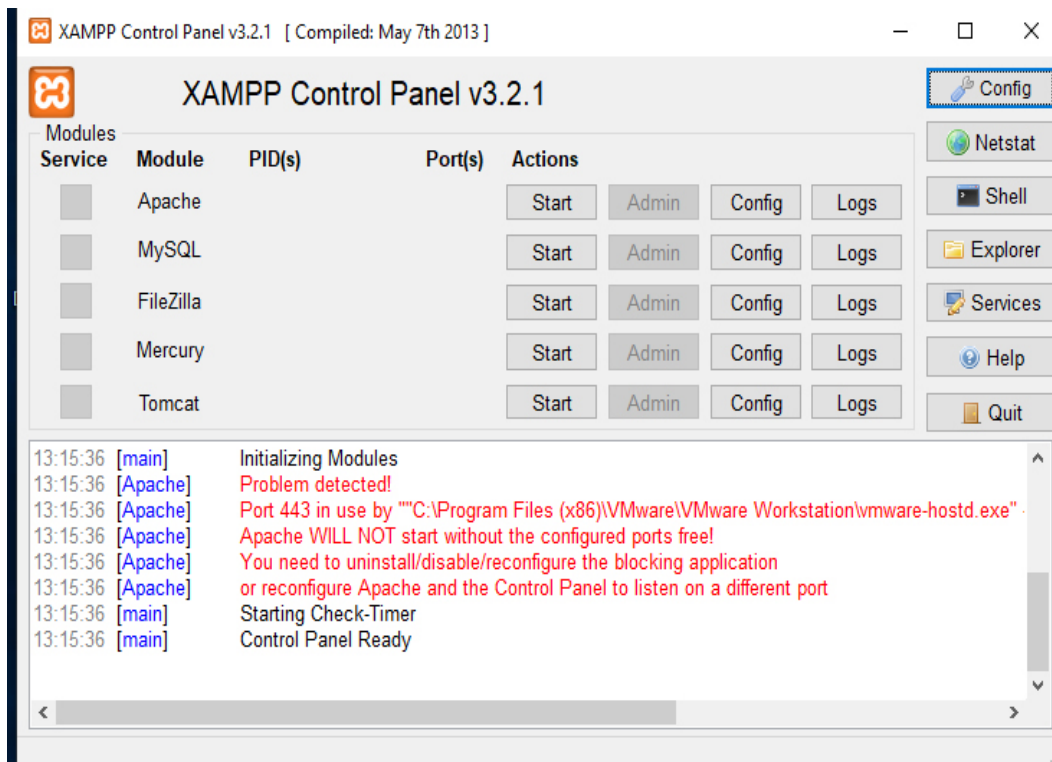
7. username: admin
8. Password: Spokentutorial1@
9. Email address: priyankaspokentutorial@gmail.com
10. Note down the username and password that you have created for future use.
11. Select your country as **India** and timezone as **Asia/Kolkata** from the dropdowns. Click on "Update profile" button.
12. If you get any error, Go to C:\Moodle\server\moodledata and delete all the files and folder inside **moodledata** folder. Reload the homepage.
13. Next page is the front page settings. This is the page people will see when they visit the Moodle site. Enter your details.
14. Full site name: Digital India LMS
15. Short name: Digital India LMS
16. Under **New settings-Location settings**, select India/Kolkata as **Default timezone**.
17. In the Outgoing mail configuration window, add .com at the end of **noreply@localhost**
18. Click on "Save Changes" button.
19. You can see the front page of the moodle site.
20. To practise using the side-by-side method, adjust the size of the web browser containing the video to the left half of your screen. On the right half open and fit the web browser containing Moodle page.

3 XAMPP - Errors

Go through the information given below if you get an error as shown below:

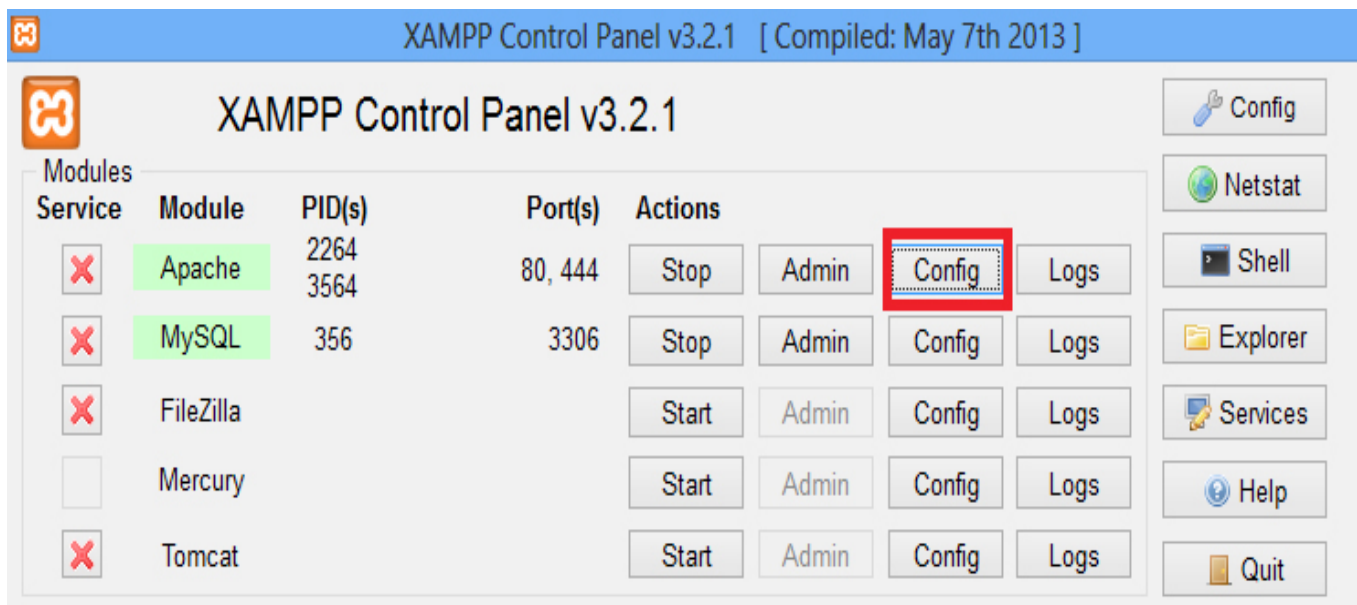
3.1 Apache port error

1. Here, the message says that Port 443 in use by some other program. We need to assign a different port number.



3.2 Solution to resolve the error:

1. Click on Apache Config.



2. Select Apache (httpd-ssl.conf)

The screenshot shows the XAMPP Control Panel v3.2.1 interface. The Apache service is listed with a red 'X' icon, indicating it is not running. The 'Config' button for Apache is highlighted, and a dropdown menu is open, showing the following options:

- Apache (httpd.conf)
- Apache (httpd-ssl.conf) (highlighted with a red box)
- Apache (httpd-xampp.conf)
- PHP (php.ini)
- phpMyAdmin (config.inc.php)
- <Browse> [Apache]
- <Browse> [PHP]
- <Browse> [phpMyAdmin]

Below the service list, there are error messages for Apache:

```
3:02:01 PM [Apache] Problem detected!  
3:02:01 PM [Apache] Port 81 in use by ""C:\Bitnami\DRUPAL~1.1-1\apache2\bin\httpd.e  
3:02:01 PM [Apache] Apache WILL NOT start without the configured ports free!  
3:02:01 PM [Apache] You need to uninstall/disable/reconfigure the blocking application
```

3. httpd-ssl.conf file will be opened in the notepad.

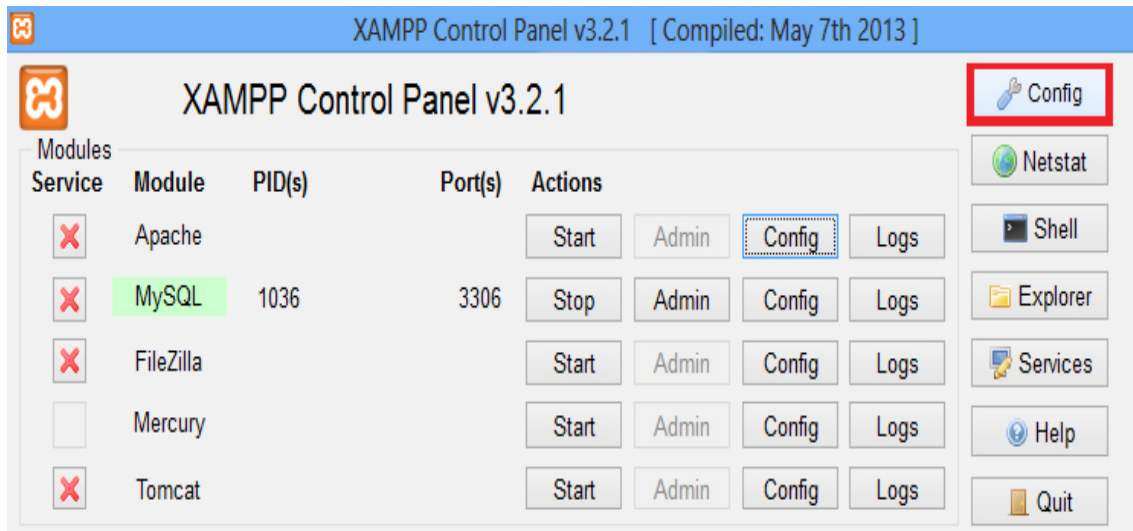
4. Press CTRL+F to search for Listen 443. Change port 443 to 444 and save the document.

The screenshot shows the Notepad application editing the httpd-ssl.conf file. The text in the file is as follows:

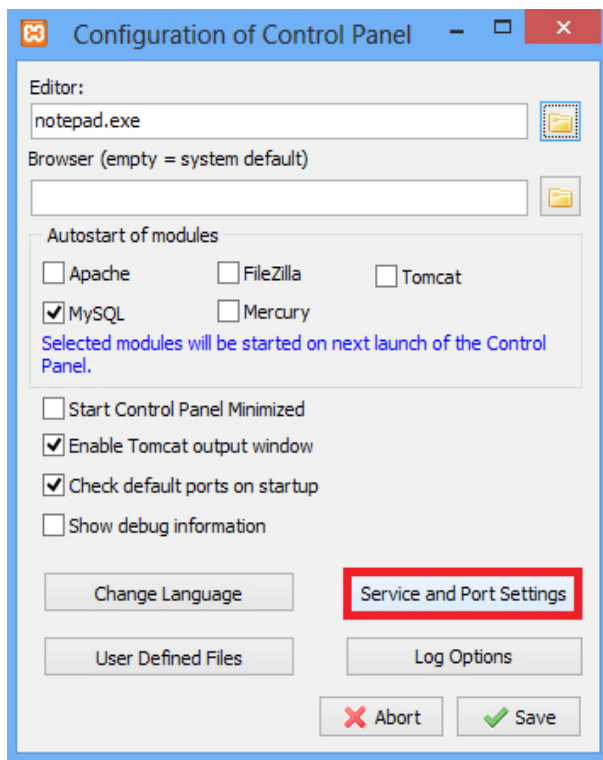
```
#  
# This is the Apache server configuration file providing SSL support.  
# It contains the configuration directives to instruct the server how to  
# serve pages over an https connection. For detailed information about these  
# directives see <URL:http://httpd.apache.org/docs/2.4/mod/mod_ssl.html>  
#  
# Do NOT simply read the instructions in here without understanding  
# what they do. They're here only as hints or reminders. If you are unsure  
# consult the online docs. You have been warned.  
#  
# Required modules: mod_log_config, mod_setenvif, mod_ssl,  
# socache_shmcb_module (for default value of SSLSessionCache)  
#  
#  
# When we also provide SSL we have to listen to the  
# standard HTTP port (see above) and to the HTTPS port  
#  
Listen 444  
##  
## SSL Global Context  
##  
## All SSL configuration in this context applies both to  
## the main server and all SSL-enabled virtual hosts.  
##
```

A search window titled 'Find' is open, showing the search term 'listen 443' and the 'Find Next' button. The result 'Listen 444' is highlighted in the text area.

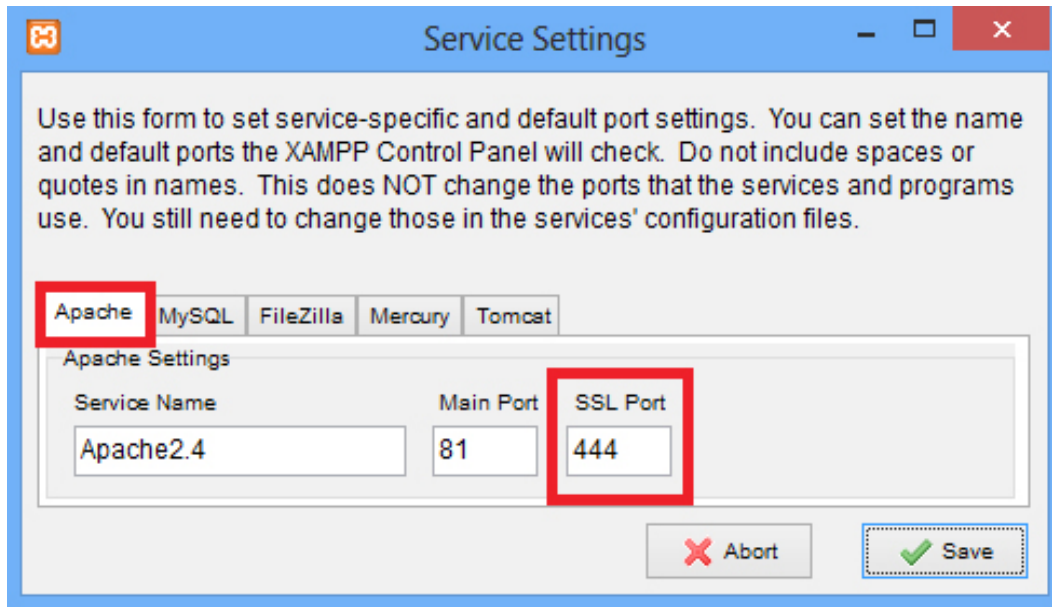
5. Click on XAMPPconfig (On Top Right)



6. In the next window, Click on Service and Port Settings



7. Go to Apache tab, change SSL Port from 443 to 444 and click on save.



8. Close Xampp and restart Apache and MySQL services.
9. The below screen shows that all services are running successfully.

